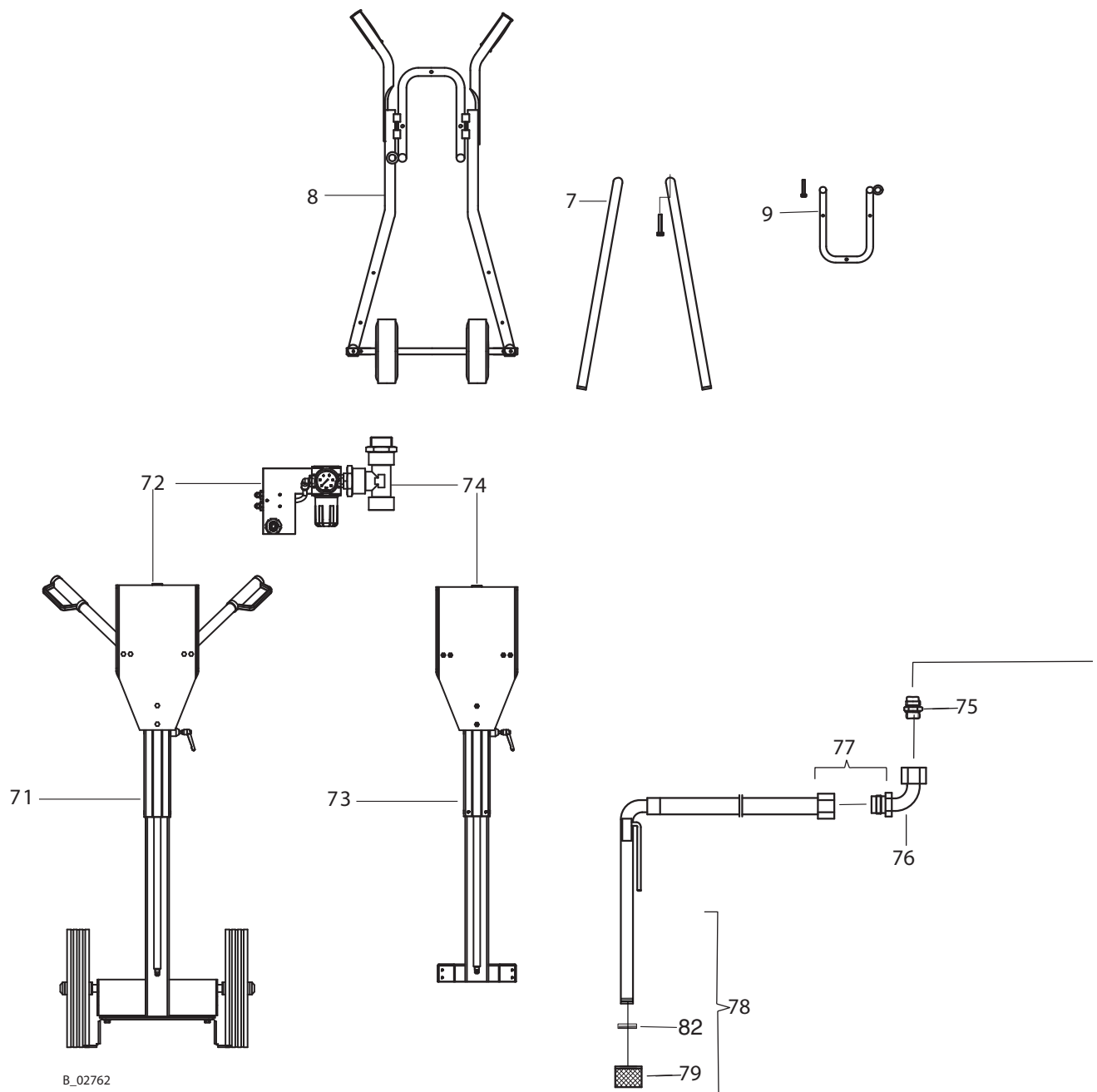


7 ACCESSORIES

7.1 ACCESSORIES FOR WILDCAT AND PUMA PUMPS



List Accessories

Pos	K	Description	WILDCAT	PUMA
			18-40	28-40
			No.	No.
A		Piston pump PE/TG	366110	367103
1		Separating agent 250 ml; 250 cc	9992504	
2		Earthing cable 3 m; 9.8 ft	236219	
3	◆	Filter pressure regulator with plastic bow	367062	
4	◆	Metal bow for 367062	115985	
5		Filter-relief combination	367135	
7		4-leg stand	367023	
8		Stand 4 with wheels assy.	367121	
9		Mounting for wall 4 assy.	367020	
10		Rigid suction system 352	367986	
11	◆	Sealing ring A18x22x2.5 Cu	9925024	
12		Reducing double nipple with 2 x 60°, G 3/8" -NPSM3/8"	367556	
13		Upper hopper set 5 l; 1.3 gal	367045	
14		Suction elbow for pos. 13	366950	
15	◆	Filter DN 25 mm; ID 1 inch, MW 0.8 mm, M28x1.5	250245	
16	◆	Filter DN 25 mm; ID 1 inch, MW 1.25 mm, M28x1.5	250243	
17	◆	Filter DN 25 mm; ID 1 inch, MW 1.0 mm, M28x1.5	344341	
18	◆	Filter DN 13 mm; ID 0.5 inch, MW 0.8 mm, M15x1	250244	
19	◆	Suction filter bag MW 0.3 mm	97531	
20		Barrel suction pipe DN 25 mm; ID 1 inch	115175	
21	◆	Suction hose flexibly, DN 25 mm; ID 1 inch	367140	
22	◆	Extension hose, DN 25 mm; ID 1 inch	115285	
23	◆	Extension hose, DN 13 mm; ID 0.5 inch	115284	
24		Suction elbow M36x2	97075	
25		Air cap LV (red = suitable for low viscosity paints)	394910	
26		Air cap HV (blue = suitable for high viscosity paints)	394911	
27		AC 4600 Pro (blue) with nozzle 11/40, 25 MPa; 250 bar; 3625 psi, NPSM 1/4"	394150	
28		AC 4600 Pro (red) with nozzle 11/40, 25 MPa; 250 bar; 3625 psi, NPSM 1/4"	394151	
29	◆	Nozzle ACF3000 -> see nozzle list in gun manual	379HHH...	
30		Airless gun AG-14, NPSM 1/4", 27 MPa; 270 bar; 3920 psi without Trade Tip nozzle	502119	
32		Adapter M16-M20	118231	
33	◆	Return tube	366290	
34		Return tube (for pos. 5)	115858	
35	◆	Hose set AC Material DN3, Air DN6, 7.5 m; 24.6 ft;	9984595	
36	◆	Hose set AC Material DN3, Air DN6, 10 m; 32.8 ft,	9984596	

◆ Wearing part

List Accessories

Pos	K	Description	WILDCAT	PUMA
			18-40	28-40
			No.	No.
37	◆	High-pressure hose Airless, 1/4 NPSM, DN 4 mm; ID 0.16 inch, 7.5 m; 24.6 ft, 27 MPa; 270 bar; 3920 psi	9984573	
38	◆	High-pressure hose Airless, 1/4 NPSM, DN 3 mm; ID 0.12 inch, 7.5 m; 24.6 ft, 27 MPa; 270 bar; 3920 psi	9984583	
39		Tool set	368870	
40		High-pressure filter HPF-3, NPSM 3/8", with ball valve made of steel	367175	
41		Air cap (green = small air requirement)	394912	
42	◆	Sealing ring A17x21x1.5 AL	9974111	
43		Double nipple G 3/8", -M20x2	367962	
44	◆	Return hose DN 13 mm; ID 0.5 inch, M20x2, (incl. pos. 42 + pos. 43)	367189	
45		Return tube HPF (incl. pos. 42 and 43)	367188	
46		Mounting for wall assy. for high-pressure filter (for pos. 40 or. 63)	367115	
47		AC 4600 Pro (green) with nozzle 11/40, 25 MPa; 250 bar; 3625 psi, NPSM 1/4"	394152	
48		Adapter NPSM 3/8" I -NPSM1/4" A	367562	
49		Adapter NPSM 3/8" I -M16x1.5 A	367563	
50	◆	Hose set AC Material DN4, Air DN6, 7.5 m; 24.6 ft;	2302378	
51	◆	Hose set AC Material DN4, Air DN6, 10 m; 32.8 ft,	2302379	
53	◆	Wagner Trade Tip nozzles, selection table see chap. 7.2	552HHH-	
55		Separating agent 10 l; 2.6 gal	356940	
63		High-pressure filter HPF-3 NPSM 3/8" with ball valve made of stainless steel	367178	
64	◆	Sealing ring A18x22x2.5 AL	9974112	
65	◆	Suction hose assy. Lack Niro; DN 13 mm; ID 0.5 inch, 1 m; 3.28 ft, M36X2	97073	
66		Quick coupling with hose nozzle	9998811	
67		Lifting screw	9907133	
68	◆	O-ring PTFE (spare part for pos. 21)	367527	
69	◆	O-ring FEP (spare part for pos. 21)	9974127	
70	◆	Washer PTFE (spare part for pos. 21)	367959	
71		Lifting trolley	367031	
72		Lifting trolley pneumatic	367032	
73		Wall lifting gear	367035	
74		Wall lifting gear pneumatic	367036	

◆ Wearing part

OPERATING MANUAL



7.2 SELECTION TABLE TRADE TIP NOZZLES (AIRLESS)

Airless-nozzle list

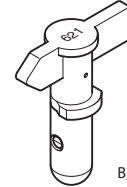
Wagner Trade Tip 2
to 270 bar
(27 MPa)



B_02818

without nozzle
F-thread (11/16 - 16 UN)
for Wagner spray gun
Part No. 556042

without nozzle
G-thread (7/8 - 14 UNF)
for Graco/Titan spray gun
Part No. 556041

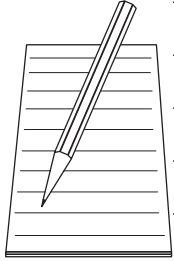


B_02819

Application	Nozzle mark	Spray angle	Holes inch / mm	Spray width mm ¹⁾	Part No.	
Natural paint Transparent lacquer Oils	Spray gun filter „RED“	407	40°	0.007 / 0.18	160	552407
		507	50°	0.007 / 0.18	190	-----
		209	20°	0.009 / 0.23	145	552209
		309	30°	0.009 / 0.23	160	552309
		409	40°	0.009 / 0.23	190	552409
		509	50°	0.009 / 0.23	205	552509
609	60°	0.009 / 0.23	220	552609		
Synthetic resin paints PVC paint	Spray gun filter „YELLOW“	111	10°	0.011 / 0.28	85	552111
		211	20°	0.011 / 0.28	95	552211
		311	30°	0.011 / 0.28	125	552311
		411	40°	0.011 / 0.28	195	552411
		511	50°	0.011 / 0.28	215	552511
		611	60°	0.011 / 0.28	265	552611
Paint, undercoat Zinc chromate primer Priming paint Filler	Spray gun filter „WHITE“	113	10°	0.013 / 0.33	100	552113
		213	20°	0.013 / 0.33	110	552213
		313	30°	0.013 / 0.33	135	552313
		413	40°	0.013 / 0.33	200	552413
		513	50°	0.013 / 0.33	245	552513
		613	60°	0.013 / 0.33	275	552613
813	80°	0.013 / 0.33	305	552813		
Filler Spray primer Rustproofing paint	Spray gun filter „GREEN“	115	10°	0.015 / 0.38	90	552115
		215	20°	0.015 / 0.38	100	552215
		315	30°	0.015 / 0.38	160	552315
		415	40°	0.015 / 0.38	200	552415
		515	50°	0.015 / 0.38	245	552515
		615	60°	0.015 / 0.38	265	552615
		715	70°	0.015 / 0.38	290	552715
		815	80°	0.015 / 0.38	325	552815
Spray primer Rustproofing paint Minium Latex paint	Spray gun filter „GREEN“	217	20°	0.017 / 0.43	110	552217
		317	30°	0.017 / 0.43	150	552317
		417	40°	0.017 / 0.43	180	552417
		517	50°	0.017 / 0.43	225	552517
		617	60°	0.017 / 0.43	280	552617
		717	70°	0.017 / 0.43	325	552717
		219	20°	0.019 / 0.48	145	552219
		319	30°	0.019 / 0.48	160	552319
		419	40°	0.019 / 0.48	185	552419
		519	50°	0.019 / 0.48	260	552519
		619	60°	0.019 / 0.48	295	552619
		719	70°	0.019 / 0.48	320	552719
819	80°	0.019 / 0.48	400	552819		
Mica paint Zinc dust coating Dispersions	Spray gun filter „WHITE“	221	20°	0.021 / 0.53	145	552221
		421	40°	0.021 / 0.53	190	552421
		521	50°	0.021 / 0.53	245	552521
		621	60°	0.021 / 0.53	290	552621
		821	80°	0.021 / 0.53	375	552821
Rustproofing paint	Spray gun filter „WHITE“	223	20°	0.023 / 0.58	155	552223
		423	40°	0.023 / 0.58	180	552423
		523	50°	0.023 / 0.58	245	552523
		623	60°	0.023 / 0.58	275	552623
		723	70°	0.023 / 0.58	325	552723
		823	80°	0.023 / 0.58	345	552823
Dispersions Dispersion paint, distemper and filler paint	Spray gun filter „GREEN“	225	20°	0.025 / 0.64	130	552225
		425	40°	0.025 / 0.64	190	552425
		525	50°	0.025 / 0.64	230	552525
		625	60°	0.025 / 0.64	250	552625
		825	80°	0.025 / 0.64	295	552825
		227	20°	0.027 / 0.69	160	552227
		427	40°	0.027 / 0.69	180	552427
		527	50°	0.027 / 0.69	200	552527
		627	60°	0.027 / 0.69	265	552627
		827	80°	0.027 / 0.69	340	552827
		629	60°	0.029 / 0.75	285	552629
		231	20°	0.031 / 0.79	155	552231
		431	40°	0.031 / 0.79	185	552431
		531	50°	0.031 / 0.79	220	552531
		631	60°	0.031 / 0.79	270	552631
		433	40°	0.033 / 0.83	220	552433
		235	20°	0.035 / 0.90	160	552235
		435	40°	0.035 / 0.90	195	552435
535	50°	0.035 / 0.90	235	552535		
635	60°	0.035 / 0.90	295	552635		
839	80°	0.039 / 0.99	480	-----		
Large-area paintwork	Spray gun filter „GREEN“	243	20°	0.043 / 1.10	185	552243
		543	50°	0.043 / 1.10	340	552543
		552	50°	0.052 / 1.30	350	552552

1) Jet width in mm; inches at a distance of 30 cm; 11.8 inches from the object and at a pressure of 10 MPa; 100 bar; 1450 psi, synthetic resin paint, 20 DIN4 seconds.

OPERATING MANUAL



A series of horizontal lines for writing, starting from the notepad icon and extending across the page.

8 SPARE PARTS

8.1 HOW TO ORDER SPARE PARTS

Always supply the following information to ensure delivery of the right spare part:

Part Number, description and quantity

The quantity need not be the same as the number given in the „Quantity“ column. This number merely indicates how many of the respective parts are used in each sub assembly.



The following information is also required to ensure smooth processing of your order:

- Address for the invoice
- Address for delivery
- Name of the person to be contacted in the event of any queries
- Type of delivery required (air freight or mail, sea route or overland route, etc.)

Marks in spare parts lists

Note to column „K“ in the following spare parts lists.

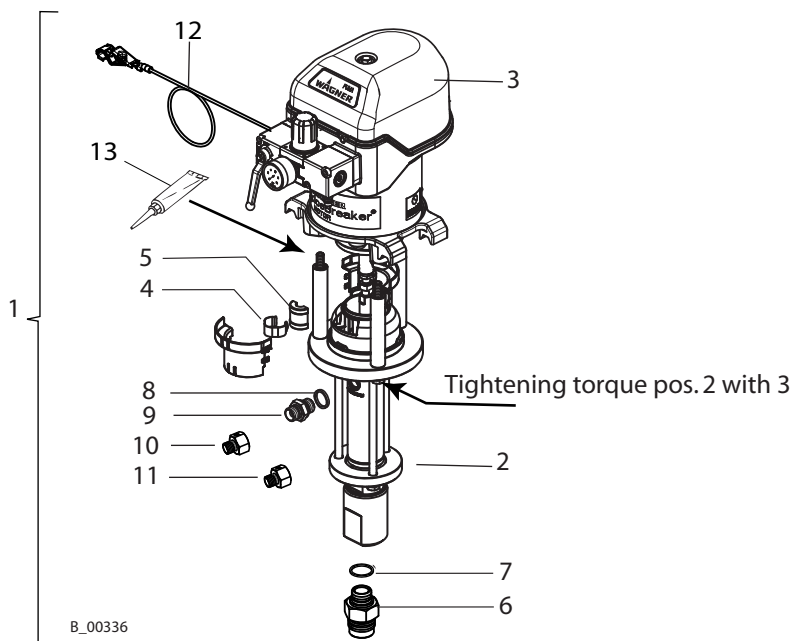
- ◆ = Wearing parts
Note: No liability is assumed for wearing parts
- = Not part of standard equipment, available, however, as additional extra.

	 WARNING
	<p>Incorrect maintenance/repair! Danger to life and equipment damage</p> <p>→ Only a WAGNER service center or a suitably trained person may carry out repairs and replace parts.</p> <p>→ Only repair and replace parts that are listed in the chapter "Spare parts catalog".</p> <p>→ Before all work on the unit and in the event of work interruptions:</p> <ul style="list-style-type: none"> - Disconnect the control unit from the mains. - Relieve the pressure from the spray gun and unit. - Secure the spray gun against actuation. <p>→ Observe the operating and service instructions when carrying out all work.</p>

SIHL_0048_GB



8.2 OVER VIEWS MODULES

Pos	Description	WILDCAT	PUMA
		18-40 PE/TG	28-40 PE/TG
1	Piston pump	366110	367103
2	Material pump	367070	
3	Air motor	366080	367080
4	Spring	367530	
5	Coupling	367529	
6	Double nipple (M36x2 - G3/4")	367958	
7	Sealing ring	9974109	
8	Sealing ring	9925024	
9	Double nipple (G 3/8" -NPSM 3/8")	367556	
10	Adapter (NPSM 3/8" -NPSM1/4")	367562	
11	Adapter (NPSM 3/8" -M16x1.5)	367563	
12	Earthing cable assy.	236219	
13	Molykote DX grease	9992616	
Tightening torque Air motor/ Material pump		25 Nm; 18 lbft	
Tightening torque Pos. 6		160 Nm; 118 lbft	
Tightening torque Pos. 9		100 Nm; 74 lbft	



8.3 AIR MOTORS

8.3.1 AIR MOTORS WILDCAT AND PUMA

	 WARNING
	<p>Incorrect maintenance/repair! Risk of injury and damage to the equipment</p> <p>→ Repairs and part replacement may only be carried out by specially trained staff or a WAGNER service center.</p> <p>→ Before all work on the unit and in the event of work interruptions:</p> <ul style="list-style-type: none"> - Switch off the energy/compressed air supply. - Relieve the pressure from the spray gun and unit. - Secure the spray gun against actuation. <p>→ Observe the operating and service instructions when carrying out all work.</p>

SIHI_0004_GB

Spare parts list for air motor			WILDCAT Ø80mm/ H75mm Ø3.1inch/S3inch		PUMA Ø100mm/ H75mm Ø4inch/S3inch	
			Qty	No.	Qty	No.
1		Air motor		366080		367080
2		Flange	1	367316	1	367316
3		Piston rod	1	367302	1	367302
4		Cylinder rod	1	366303	1	367303
5		Compressed air pipe	1	367304	1	367304
6		Control air pipe	1	367305	1	367305
8		Stopper	2	367307	2	367307
9	◆★	Seal, outlet	2	L414.06C	2	L414.06C
10		Connection part	1	367309	1	367309
11		Silencer	1	367310	1	367310
12		Hood	1	367311	1	367311
13	◆★	Filter air pressure	1	367313	1	367313
14	◆★	Filter control air	1	367314	1	367314
15		Casing	1	367312	1	367312
16		Shoulder screw	2	367318	2	367318
17	◆	Sound absorbing mat	1	367319	1	367319
18		Spring pin	2	367320	2	367320
19		Distributor	1	367321	1	367321
20	◆	Pressure regulator	1	9998676	1	9998676

◆ = Wearing part

★ = Included in service set

Spare parts list for air motor			WILDCAT Ø80mm/ H75mm Ø3.1inch/S3inch		PUMA Ø100mm/ H75mm Ø4inch/S3inch	
			Qty	No.	Qty	No.
20	◆	Pressure regulator XR-15 (as additional extra)		-		-
21	◆	Angle ball valve	1	367061	1	367061
22		Connection piece	2	367322	2	367322
23		Filter seat	1	367324	1	367324
24		Stop washer SW9 180	1	9943114	1	9943114
25		Throttle		-		-
26		Handle SW9	1	9943115	1	9943115
27		Hexagonal screw	1	9943116	1	9943116
28	◆	O-ring	6	9971123	6	9971123
29	◆	Rod seal	2	9974217	2	9974217
30	◆	Pilot valve	2	369290	2	369290
31	◆	Spool-sleeve combination assy.	1	9943080	1	9943080
32	◆	Permaglide bushing	1	9962018	1	9962018
33	◆	Complete piston	1	9998663	1	9998661
34	◆★	Sealing-wiper ring	1	9974090	1	9974090
35		Safety valve	1	368288	1	368288
36	◆★	O-ring	2	9974115	2	9974084
37	◆★	O-ring	2	9974085	2	9974085
39	◆★	O-ring	2	9974089	2	9974089
40	◆★	O-ring	2	9974095	2	9974095
41	◆★	O-ring	2	9971448	2	9971448
42	◆★	O-ring	1	9974097	1	9974097
43	◆★	O-ring	1	9974098	1	9974098
44		Threaded plug	2	9998674	2	9998674
45		Threaded plug	2	9998274	2	9998274
46		Sticker WAGNER	1	366804	1	367804
47		Threaded plug	2	9998675	2	9998675
48		Control housing	1	367315	1	367315
49		Washer	2	9925033	2	9925033
50		Hexagonal screw	3	9900225	3	9900225
51		Hexagon nut	1	9910101	1	9910101
52		Washer	3	9920106	3	9920106
53		Washer	1	9920107	1	9920107

◆ = Wearing part

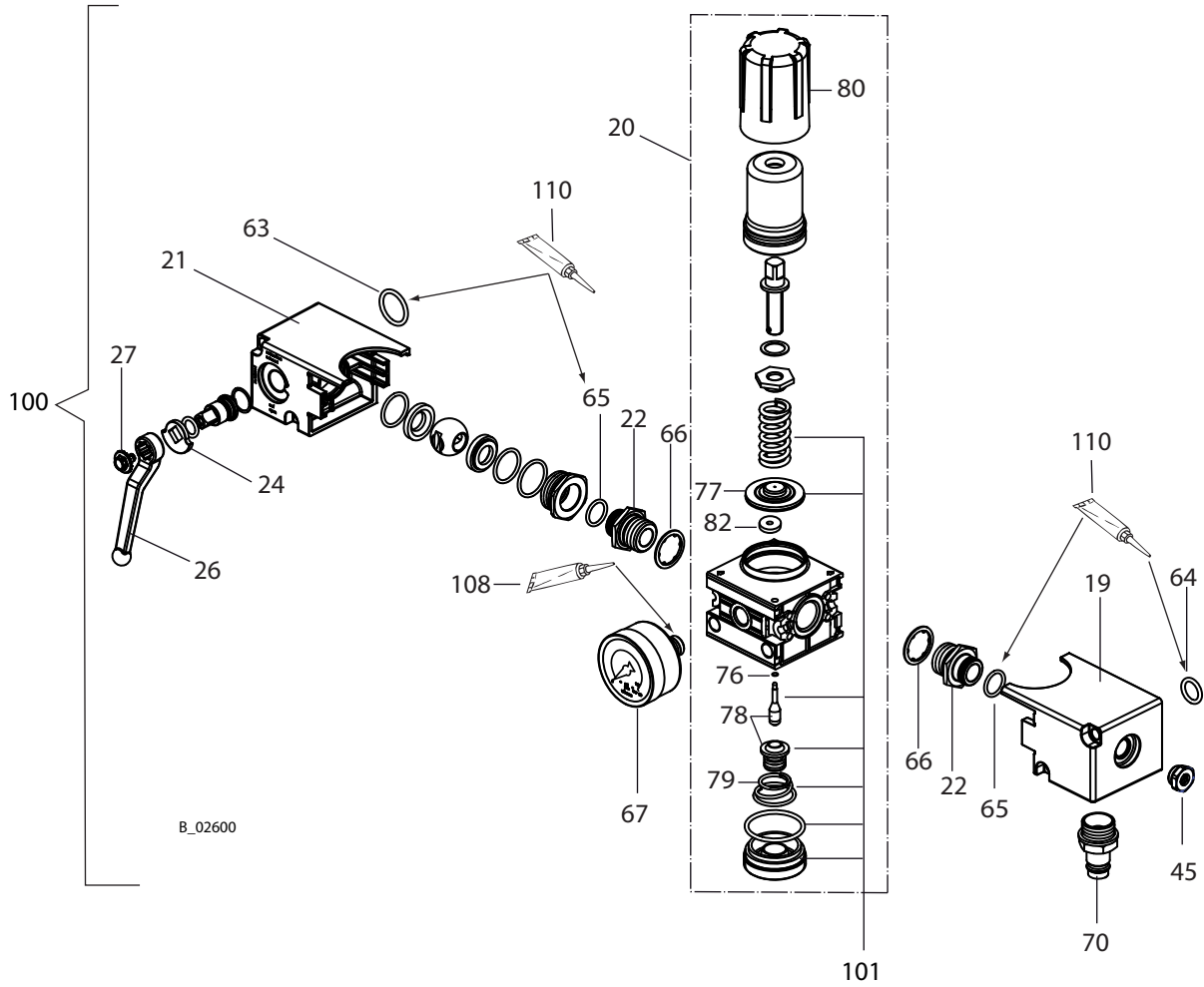
★ = Included in service set

		WILDCAT Ø80mm/ H75mm Ø3.1inch/53inch		PUMA Ø100mm/ H75mm Ø4inch/53inch		
Pos	K	Description	Qty	No.	Qty	No.
54		Screw SFS	2	9907126	2	9907126
55		Cheese-head screw M6x16	3	9900325	3	9900325
56		Washer	3	9920103	3	9920103
57	◆★	Sealing ring	1	9970149	1	9970149
58		Socket	1	9952668	1	9952668
59		Clamping strap	1	9952667	1	9952667
60		Cheese-head screw	1	9900701	1	9900701
61		Spring ring	1	9921505	1	9921505
62		Cheese-head screw	4	9900316	4	9900316
63	◆★	O-ring	1	9974086	1	9974086
64		O-ring	1	3055026	1	3055026
65		O-ring	2	9974105	2	9974105
66		Sealing ring	2	9970149	2	9970149
67		Manometer	1	9998677	1	9998677
69		Pin	1	9998718	1	9998718
70		Plug-in nipple	1	9998810	1	9998810
71		Sticker IceBreaker	1	367806	1	367806
72		Warning sign	1	367807	1	367807
74	◆	Detent body assy. ISO 1/2	1	368038	1	368038
75	◆	Silencer ISO 1/2	2	368313	2	368313
80	◆	Hand-wheel	1	2315535	1	2315535
81	◆	Spool and sleeve assembly ISO1/ ISO2	1	9943097	1	9943097
100		Pressure regulator unit assy. (incl. Pos. 62)	1	367060	1	367060
101		Wearing parts set for pos. 20	1	0115943	1	115943
106		Loctite 222, 50 ml; 50 cc		9992590		9992590
107		Loctite 243, 50 ml; 50 cc		9992511		9992511
108		Loctite 542, 50 ml; 50 cc		9992831		9992831
109		Molykote DX grease		9992616		9992616
110		Grease Beacon		9998808		9998808
		Service set	1	366995	1	367995



◆ = Wearing part

★ = Included in service set

8.3.2 REGULATOR FOR AIR MOTOR WILDCAT AND PUMA



8.4 MATERIAL PUMPS**8.4.1 MATERIAL PUMP 40 CCM**

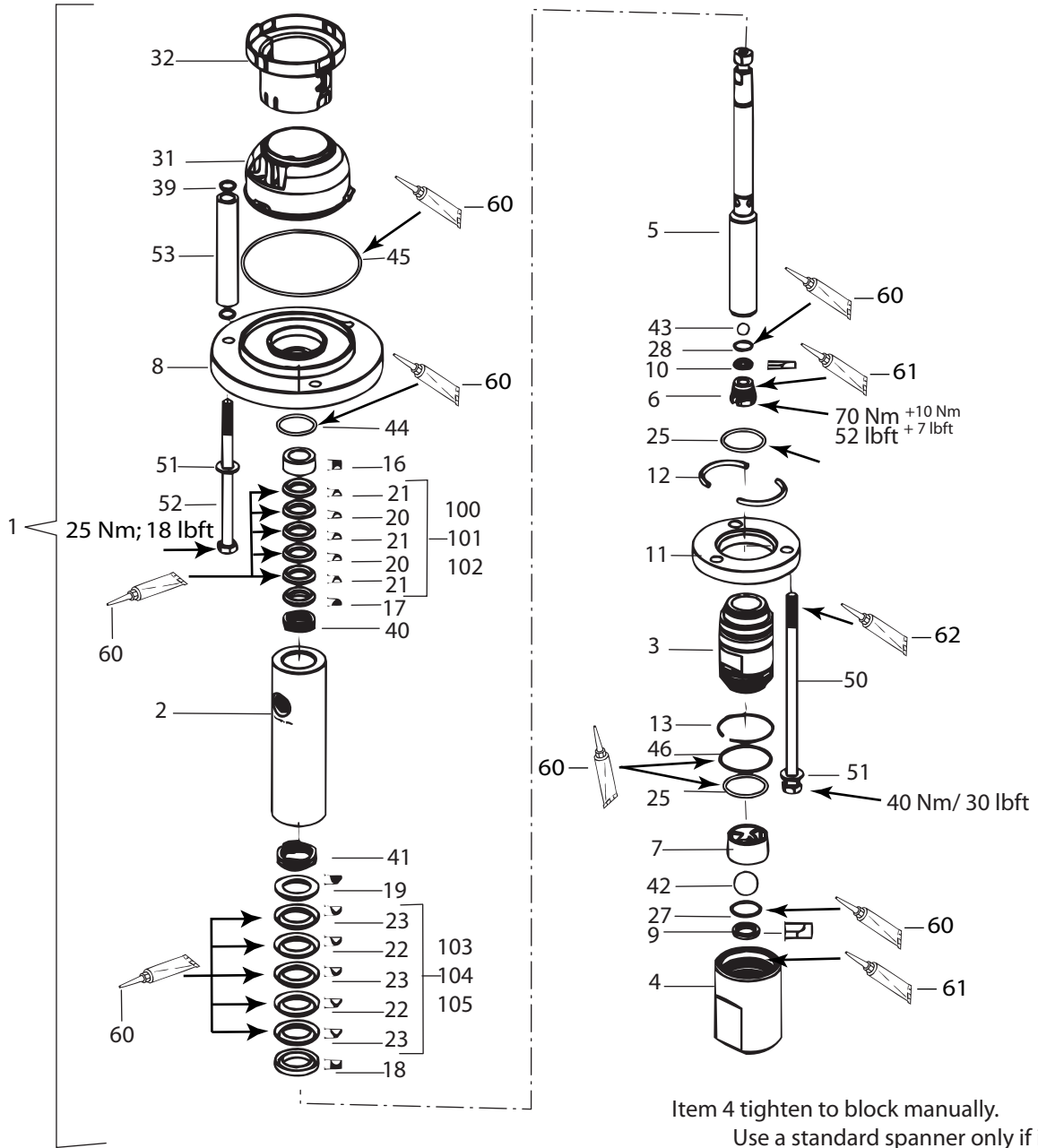
	 WARNING
	<p>Incorrect maintenance/repair! Risk of injury and damage to the equipment</p> <p>→ Repairs and part replacement may only be carried out by specially trained staff or a WAGNER service center.</p> <p>→ Before all work on the unit and in the event of work interruptions:</p> <ul style="list-style-type: none"> - Switch off the energy/compressed air supply. - Relieve the pressure from the spray gun and unit. - Secure the spray gun against actuation. <p>→ Observe the operating and service instructions when carrying out all work.</p>

SIHI_0004_GB

Spare parts list material pump

				40 cm³ PE/TG
Pos	K	Qty	Description	No.
1		1	Material pump	367070
2		1	Rod	367502
3		1	Cylinder	367503
4		1	Inlet housing	367504
5	◆	1	Piston	367505
6		1	Valve screw	367506
7	◆★	1	Ball guide inlet	367507
8		1	Connection flange	367501
9	◆	1	Valve seat, inlet	367509
10	◆	1	Valve seat, outlet	367510
11		1	Snap ring flange	367511
12		2	Snap ring half	367512
13		1	Securing ring	367513
16		1	Support ring	367516
17		1	Compression ring	367517
18		1	Support ring	367518
19		1	Compression ring	367519
100	◆		Packing PE/TG compl. (small)	115805
20	◆★	2	Sealing collar TG (small)	123398
21	◆★	3	Sealing collar PE (small)	123427
103	◆		Packing PE/TG compl. (large)	367991

◆ = Wearing part ★ = Included in service set ● = Special accessories



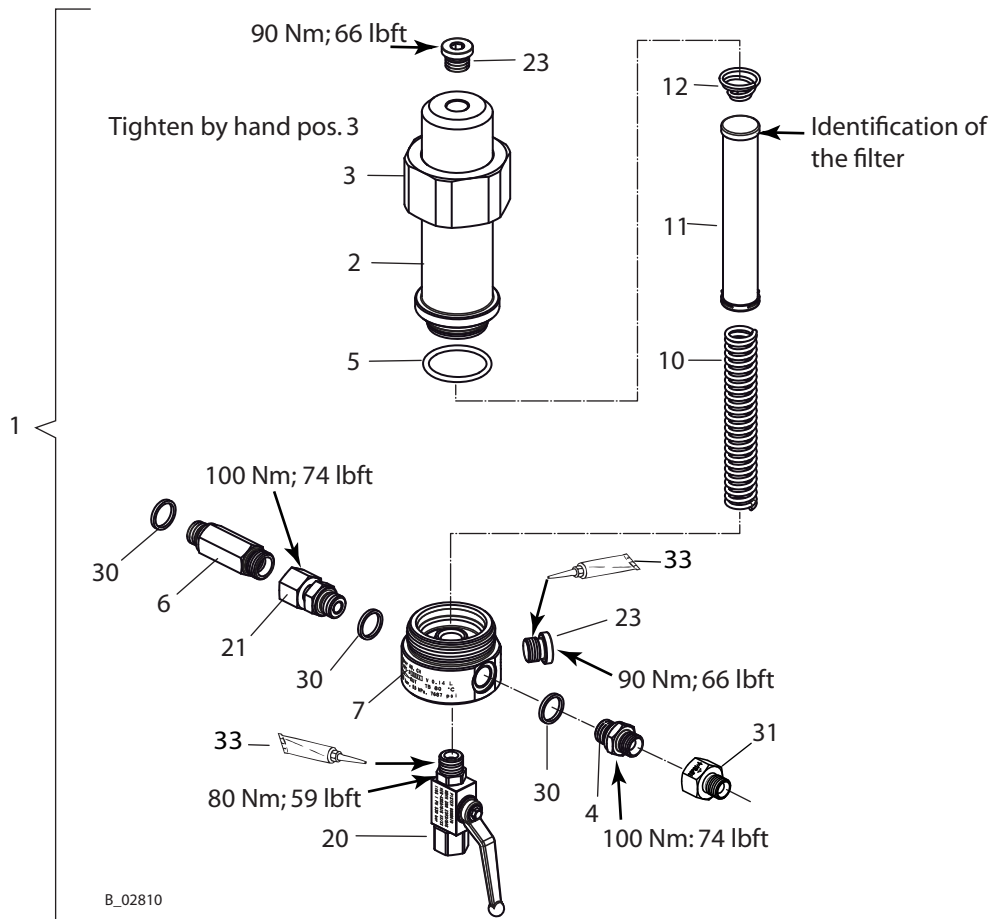
B_01275

Item 4 tighten to block manually.
 Use a standard spanner only if it's necessary.
 In this case use a spanner to counter on item 3.

Spare parts list material pump			40 cm ³ PE/TG	
Pos	K	Qty	Description	No.
22	◆★	2	Sealing collar TG (large)	367522
23	◆★	3	Sealing collar PE (large)	367523
25	◆★	2	O-ring	367525
27	◆★	1	O-ring	367527
28	◆★	1	O-ring	367528
31	◆	1	Separating fluid cup	367531
32	◆	2	Coupling cover	367532
39	◆★	6	O-ring	9974089
40	◆★	1	Wave spring (small)	9998669
41	◆★	1	Wave spring (large)	9998670
42	◆★	1	Ball (large)	9941513
43	◆★	1	Ball (small)	9941518
44	◆★	1	O-ring	9974094
45	◆★	1	O-ring	9974093
46	◆★	1	O-ring	9974106
50		3	Hexagon screw	9907124
51		6	Washer	9920106
52		3	Hexagon screw	9900225
53		3	Connecting tube	367306
60			Grease Mobilux EP 2	9998808
61			Anti-sieze paste	9992609
62			Molykote DX grease	9992616
		1	Service set PE/TG	367990

◆ = Wearing part ★ = Included in service set ● = Special accessories

8.5 HIGH-PRESSURE FILTER



B_02810

Pos	K	Qty	Description	Ball valve version in:	
				Steel	Stainless steel
				Part No.	Part No.
1			High-pressure filter HPF-3 3/8"	367175	367178
2		1	Filter housing		367911
3		1	Union nut		367912
4		1	Reducing double nipple with 2x 60°		367556
5	◆	1	O-Ring		367914
6		1	Screwed connector		367916
7		1	Distribution housing		367910
10		1	Filter support		9894245



◆ = Wearing part

● = Not part of standard equipment for spray gun. Available, however, as additional extra

Pos	K	Qty	Description	Ball valve version in:	
				Steel Part No.	Stainless steel Part No.
11	◆	1	Filter cartridges *		
			* Filter cartridge 200	295721	
			* Filter cartridge 100	3514068	
			* Filter cartridge 50	3514069	
			* Filter cartridge 20	291564	
12	◆	1	Cone spring	3514058	
20	◆	1	Ball valve	9998679	9999159
21		1	Screwed connecting piece	9998680	
23		2	Lock screw	9907127	
30	◆	3	Sealing ring	9925024	
31		1	Adapter I NPSM 3/8" - A NPSM 1/4"	367562	
33	●	1	Loctite 542 50 ml; 50 cc	9992831	

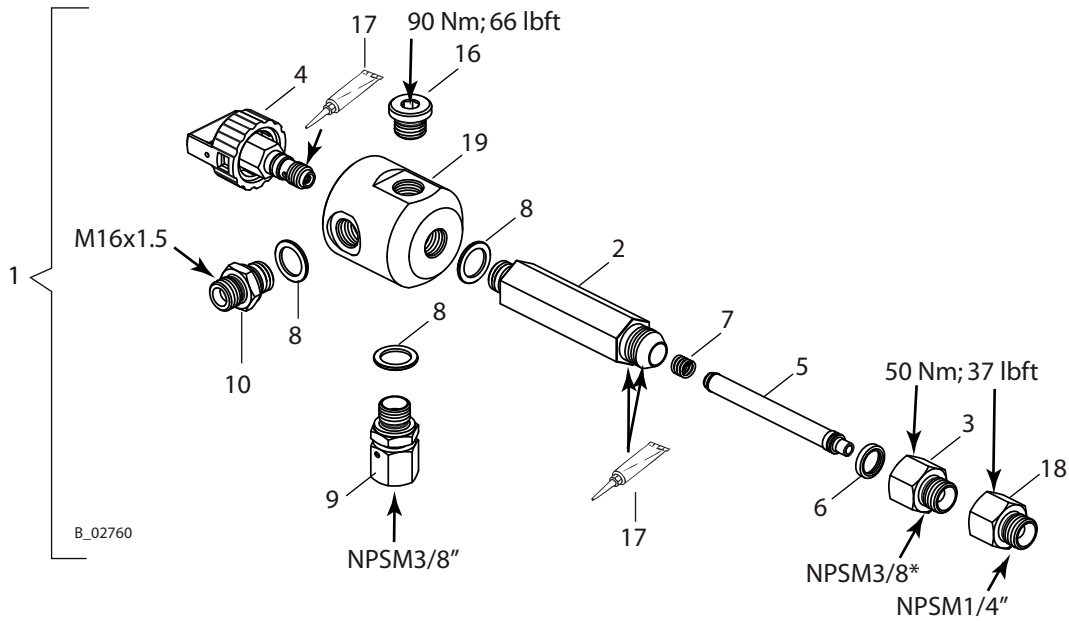
◆ = Wearing part

● = Not part of standard equipment for spray gun. Available, however, as additional extra

	 WARNING
	<p>Incorrect maintenance/repair! Danger to life and equipment damage</p> <ul style="list-style-type: none"> → Only a WAGNER service center or a suitably trained person may carry out repairs and replace parts. → Only repair and replace parts that are listed in the chapter "Spare parts catalog". → Before all work on the unit and in the event of work interruptions: <ul style="list-style-type: none"> - Disconnect the control unit from the mains. - Relieve the pressure from the spray gun and unit. - Secure the spray gun against actuation. → Observe the operating and service instructions when carrying out all work.

SIHI_0048_GB

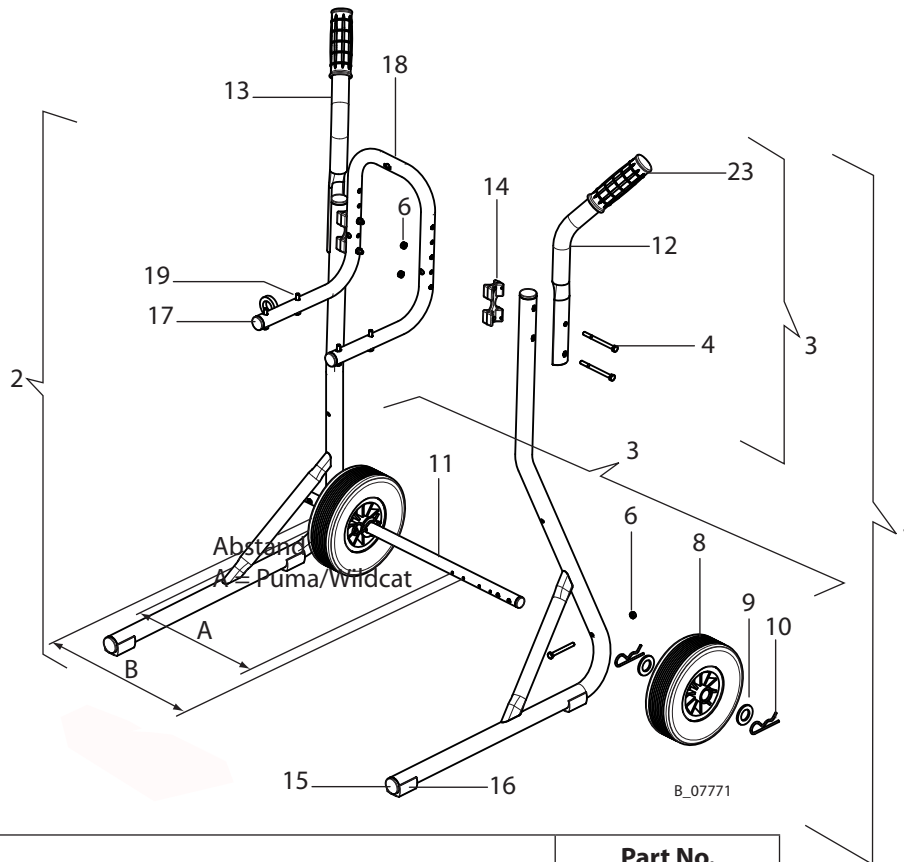
8.6 FILTER-RELIEF COMBINATION



Pos	K	Qty	Part No.	Description
1			367135	Filter-relief combination
2		1	123469	Filter housing
3		1	367564	Adapter I=M20x1.5, A=NPSM 3/8"
4	◆	1	169248	Relief valve assy.
5	◆	1	-	Filter cartridge *
			34383	* 200 mesh (red)
			43235	* 100 mesh (yellow) (Standard)
			34377	* 50 mesh (white)
			89323	* 30 mesh (green)
6	◆	1	43303	Handle sealing washer
7	◆	1	43590	Compression spring
8	◆	3	9971525	Seal, U-Seal
9		1	367567	Swivel, assy.
10		1	123510	Double connection
16		1	9904312	Lock screw
17			9992609	Anti-sieze paste
18			367562	Adapter I=NPSM 3/8"; A=NPSM 1/4"
19		1	115199	Release housing

◆ = Wearing part

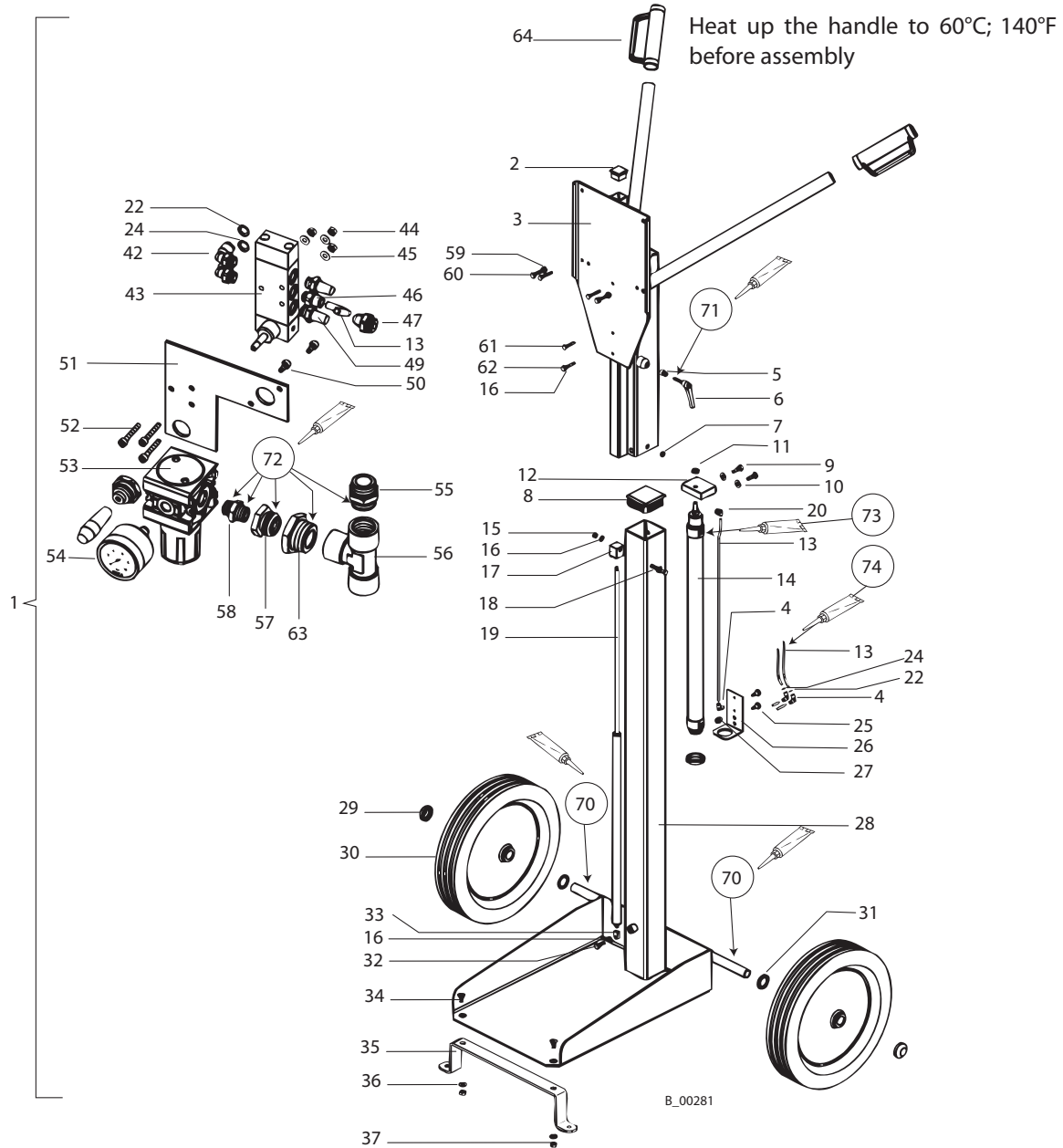
8.7 TROLLEY



Pos	K	Qty	Description	Part No. Wildcat, Puma
1		1	Trolley assy.	367121
2		1	Stand	367021
3		1	Wheel set and handles	367022
4		4	Hexagonal screw DIN931 M 6x..	9907140
6		6	Self-retaining hexagonal nut M6	9910204
8	◆	2	Wheel	2302671
9		4	Washer	340372
10		4	Spring connector	9995302
11	◆	1	Wheel axle	367945
12		1	Handle left	367946
13		1	Handle right	367947
13	◆	2	Connection part	367943
15	◆	2	Tube plug ribbed	9990812
16	◆	2	Saddle feet for round tubes	9998685
17		2	Plug	9998687
18		1	Mounting for wall	367940
19		4	Hexagon screw DIN931 M 6x..	9900218
20		2	Hexagon screw DIN933 M6x55	9907045
23	◆	2	Handle	9998747

◆ = Wearing part

8.9 LIFTING TROLLEY PNEUMATIC



Mounting materials

Pos	Qty	Part No.	Description
70	1	9998808	Grease Beacon EP2
71	1	9992528	Loctite 270
72	1	9992831	Loctite 542
73	2	9992610	Cable ties
74	3	9950615	Cable ties

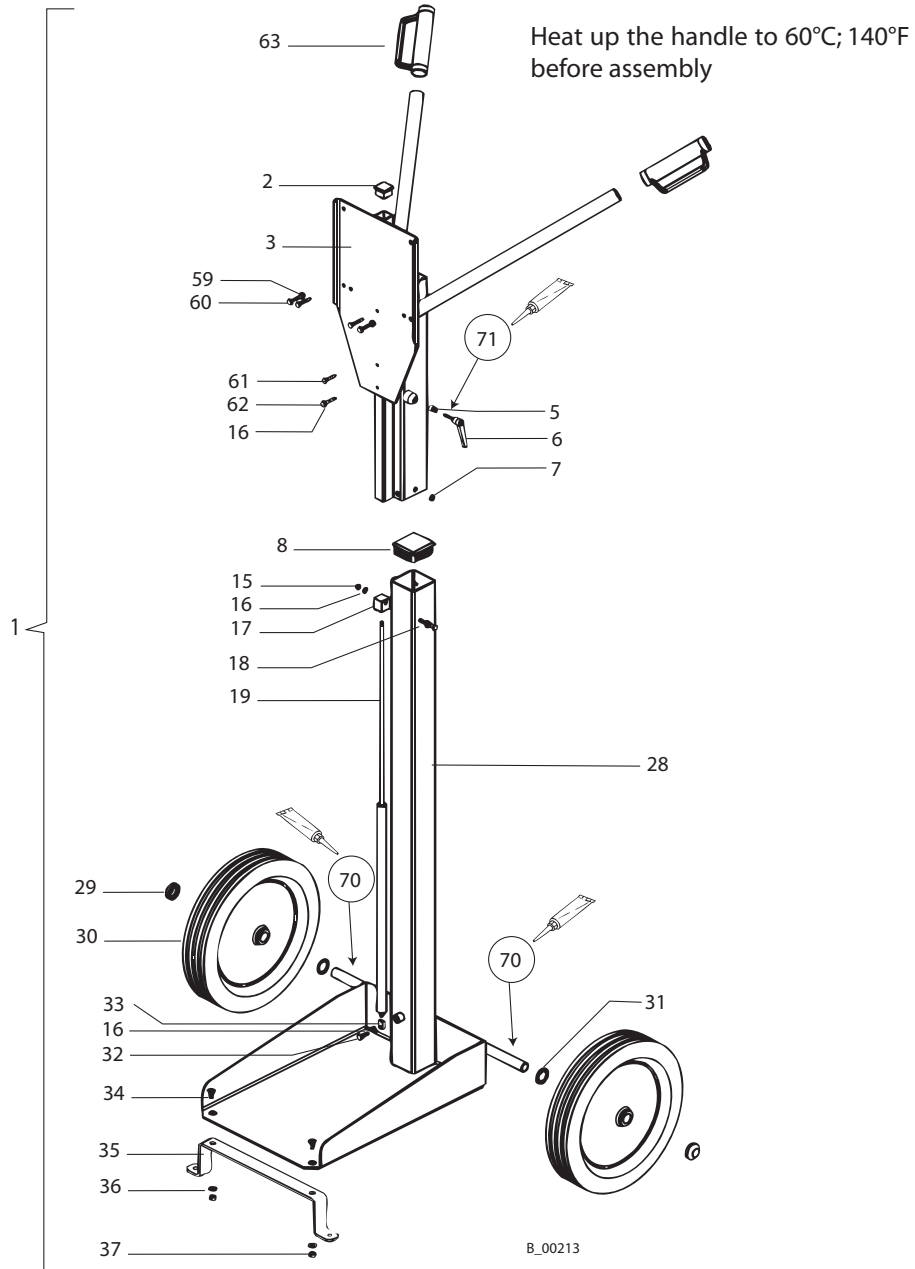
Spare parts list for Lifting trolley pneumatic				WILDCAT PUMA
Pos	K	Qty	Description	Part No.
1		1	Lifting trolley pneumatic compl.	367032
2		1	Cross head block	9999007
3		1	Lifting gear pneumatic	369237
4		3	Elbow hose connection	9999125
5		1	Joint thrust piece	9999008
6		1	Clamping lever	9998230
7	◆	14	Sliding plug	369706
8		1	Cross head block	9998232
9		2	Hexagon head screw	9900107
10		2	Washer	9920106
11		1	Hexagon nut	9911016
12		1	Mounting-part	369732
13		1	Hose black 3.4 m; 11.15 ft	9982079
14	◆	1	Cylinder	9999388
15		1	Hexagon nut with clamp	9910208
16		8	Washer	9920102
17		1	Block	369702
18		1	Hexagon head screw	9900125
19	◆	1	Gas pressure spring	9999010
20		1	Screwed elbow	9998250
22		2	Coding ring red	9998995
24		2	Coding ring green	9998994
25		2	Bolt	369724
26		1	Angle	369723
27		1	Screw-in screw connection, straight	9998255
28		1	Trolley rack pneumatic	369236
29		2	Washer with plastic house	9998895
30		2	Wheel assy.	9994922
31		2	Retaining ring	9998894
32		1	Hexagon head screw	9900109
33		1	Joint eye on pipe	9999009
34		2	Countersunk screw	9907183
35		1	Foot set	369713
36		2	Washer	9920106
37		2	Hexagon nut	9910105

◆ = Wearing part

Spare parts list for Lifting trolley pneumatic				WILDCAT PUMA
Pos	K	Qty	Description	Part No.
42		2	Screw in angle	9998110
43	◆	1	Way valve	9943120
44		3	Hexagon nut	9910108
45		3	Washer	9920104
46		1	Screw-in screw connection, straight	9998090
47		1	Screw in angle	9998250
49		2	Silencer	9991761
50		2	Cap head screw	9900334
51		1	Mounting sheet	369721
52		3	Cap head screw	9900365
53	◆	1	Pressure regulator	9998676
54	◆	1	Manometer	9998677
55		1	Double nipple	9985684
56		1	Fitting T	9999109
57		1	Reducing nipple	9985685
58		1	Double nipple	9985720
59		2	Hexagon nut	9910107
60		2	Hexagon head screw	9900123
61		1	Hexagon head screw	9907195
62		3	Hexagon head screw	9907196
63		1	Reducing nipple	-
64		2	Handle with hand protection black	9998893

◆ = Wearing part

8.10 LIFTING TROLLEY



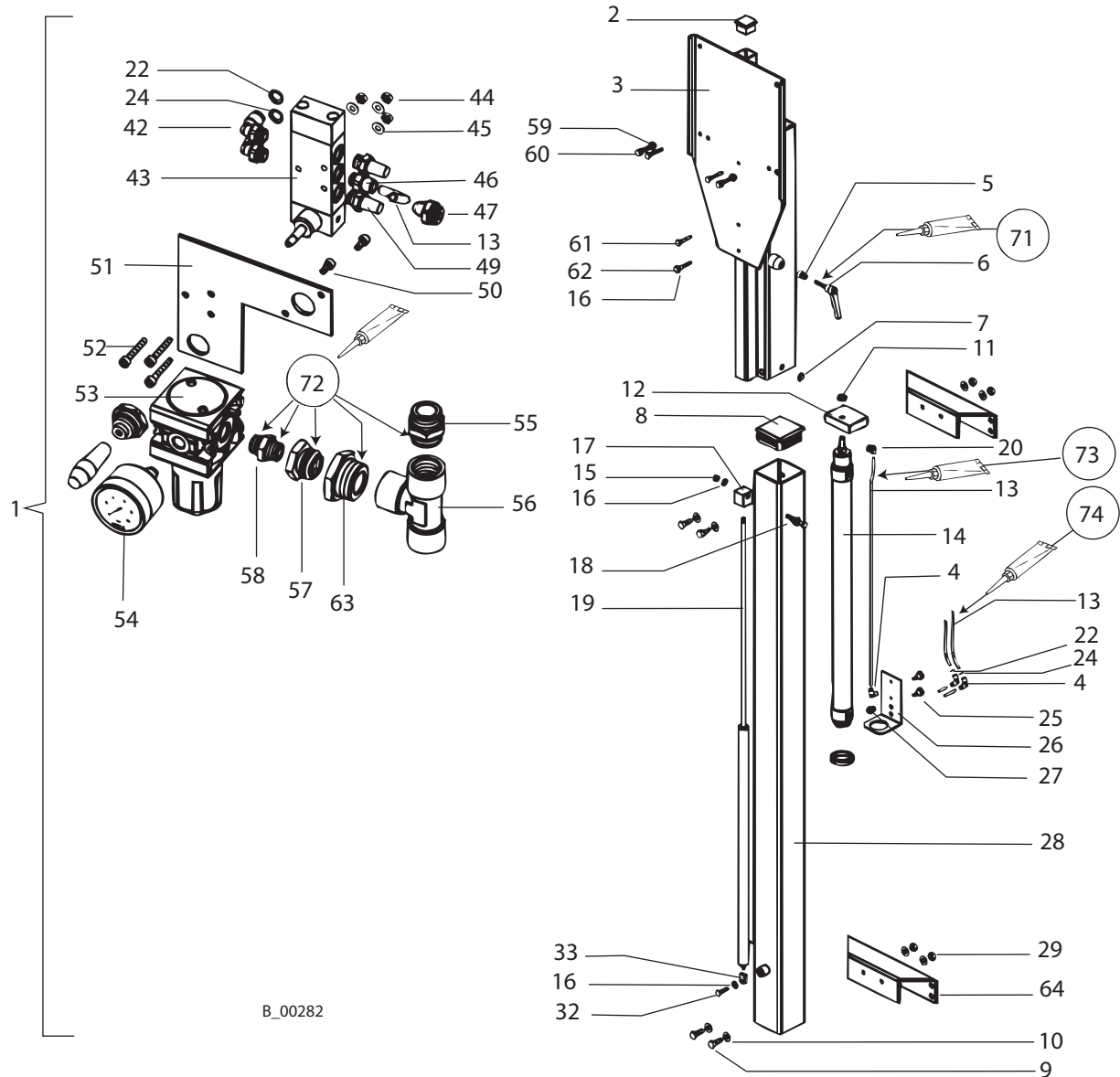
Mounting materials

Pos	Qty	Part No.	Description
70	1	9998808	Grease Beacon EP2
71	1	9992528	Loctite 270

Spare parts list for Lifting trolley				WILDCAT PUMA 400N
Pos	K	Qty	Description	Part No.
1		1	Lifting trolley assy.	367031
2		1	Cross head block	9999007
3		1	Lifting gear, welded	369262
5		1	Joint thrust piece	9999008
6		1	Clamping lever	9998230
7	◆	14	Sliding plug	369706
8		1	Cross head block	9998232
15		1	Hexagon nut with clamp	9910208
16		8	Washer	9920102
17		1	Block	369702
18		1	Hexagon head screw	9900125
19	◆	1	Gas pressure spring	9994303
28		1	Trolley rack	369261
29		2	Washer with plastic house	9998895
30		2	Wheel assy.	9994922
31		2	Retaining ring	9998894
32		1	Hexagon head screw	9900109
33		1	Joint eye on pipe	9999009
34		2	Countersunk screw	9907183
35		1	Foot set	369713
36		2	Washer	9920106
37		2	Hexagon nut M10	9910105
59		2	Hexagon nut M8	9910107
60		2	Hexagon head screw M8x45	9900123
60		1	Hexagon head screw M8x45	-
61		1	Hexagon head screw M8x35	9907195
62		3	Hexagon head screw M8x40	9907196
62		1	Hexagon head screw M8x40	-
62		2	Hexagon head screw M8x55	-
63		2	Handle with hand protection black	9998893

◆ = Wearing part

8.11 WALL LIFTING GEAR PNEUMATIC



B_00282

Mounting materials

Pos	Qty	Part No.	Description
71	1	9992528	Loctite 270
72	1	9992831	Loctite 542
73	2	9992610	Cable ties
74	3	9950615	Cable ties

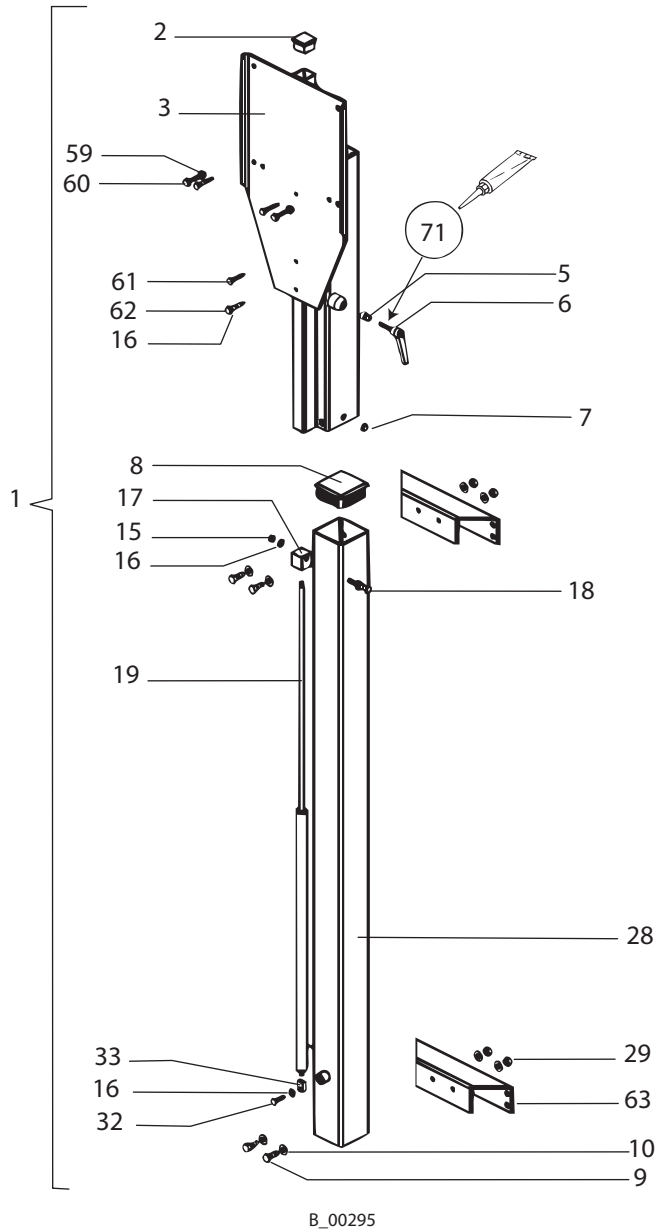
Spare parts list for Wall lifting gear pneumatic				WILDCAT PUMA
Pos	K	Qty	Description	Part No.
1		1	Wall lifting gear pneumatic assy.	367036
2		1	Cross head block	9999007
3		1	Wall lifting gear pneumatic welded	369241
4		3	Elbow hose connection	9999125
5		1	Joint thrust piece	9999008
6		1	Clamping lever	9998230
7	◆	14	Sliding plug	369706
8		1	Cross head block	9998232
9		4	Hexagon head screw	9900107
10		8	Washer	9920106
11		1	Hexagon nut	9911016
12		1	Mounting-part	369732
13		1	Hose black 3.4 m; 11.15 ft	9982079
14	◆	1	Cylinder	9999388
15		1	Hexagon nut with clamp	9910208
16		8	Washer	9920102
17		1	Block	369702
18		1	Hexagon head screw	9900125
19	◆	1	Gas pressure spring	9999010
20		1	Screwed elbow	9998250
22		2	Coding ring red	9998995
24		2	Coding ring green	9998994
25		2	Bolt	369724
26		1	Angle	369723
27		1	Screw-in screw connection, straight	9998255
28		1	Profile 1 wall pneumatic assy..	369240
29		4	Hexagon nut	9910105
32		1	Hexagon head screw	9900109
33		1	Joint eye on pipe	9999009
42		2	Coupling L	9998110
43	◆	1	Way valve	9943120
44		3	Hexagon nut	9910108
45		3	Washer	9920104
46		1	Screw-in screw connection, straight	9998090
47		1	Angle	9998250
49		2	Silencer	9991761

◆ = Wearing part

Spare parts list for Wall lifting gear pneumatic				WILDCAT PUMA
Pos	K	Qty	Description	Part No.
50		2	Cap head screw	9900334
51		1	Mounting sheet	369721
52		3	Cap head screw	9900365
53	◆	1	Pressure regulator	9998676
54	◆	1	Manometer	9998677
55		1	Double nipple	9985684
56		1	Screw connection	9999109
57		1	Reducing nipple	9985685
58		1	Double nipple	9985720
59		2	Hexagon nut	9910107
60		2	Hexagon head screw M8x45	9900123
61		1	Hexagon head screw M8x35	9907195
62		3	Hexagon head screw	9907196
63		1	Reducing nipple	-
64		2	Mounting bracket	369712

◆ = Wearing part

8.12 WALL LIFTING GEAR



Mounting materials

Pos	Qty	Part No.	Description
71	1	9992528	Loctite 270

**Spare parts list for
Wall lifting gear**

Spare parts list for Wall lifting gear				WILDCAT PUMA 400N
Pos	K	Qty	Description	Part No.
1		1	Wall lifting gear assy.	367035
2		1	Cross head block	9999007
3		1	Lifting gear, welded	369265
5		1	Joint thrust piece	9999008
6		1	Clamping lever	9998230
7	◆	14	Sliding plug	369706
8		1	Cross head block	9998232
9		4	Hexagon head screw M10x25	9900107
10		8	Washer A10.5	9920106
15		1	Hexagon nut with clamp	9910208
16		8	Washer	9920102
17		1	Block	369702
18		1	Hexagon head screw	9900125
19	◆	1	Gas pressure spring	9994303
28		1	Profile 1 wall assy.	369268
29		4	Hexagon nut M10	9910105
32		1	Hexagon head screw M8x25	9900109
33		1	Joint eye on pipe	9999009
59		2	Hexagon nut M8	9910107
60		2	Hexagon head screw M8x45	9900123
60		1	Hexagon head screw M8x45	-
61		1	Hexagon head screw M8x35	9907195
62		3	Hexagon head screw M8x40	9907196
62		1	Hexagon head screw M8x40	-
62		2	Hexagon head screw M8x55	-
63		2	Mounting bracket	369712

◆ = Wearing part